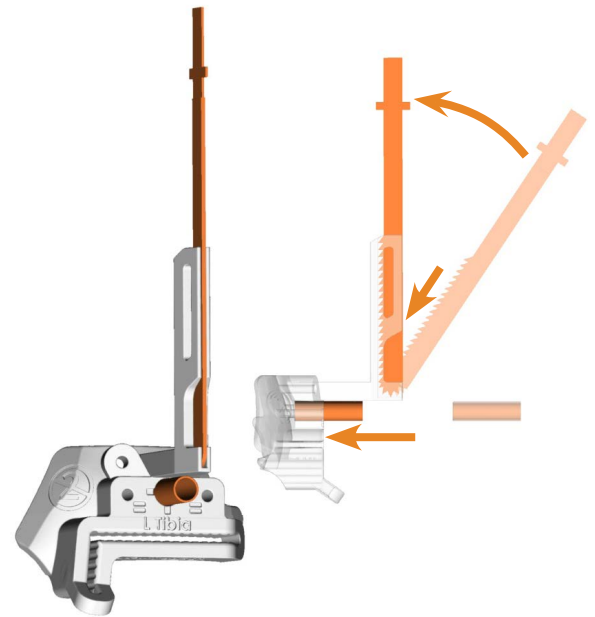


CONSULT INSTRUCTIONS FOR USE PRIOR TO USING GUIDES

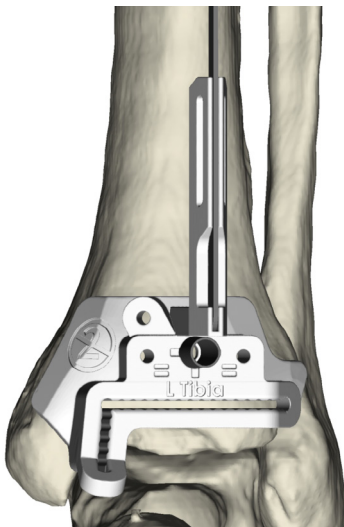
## PROCEDURE A: TIBIA CUTTING GUIDE



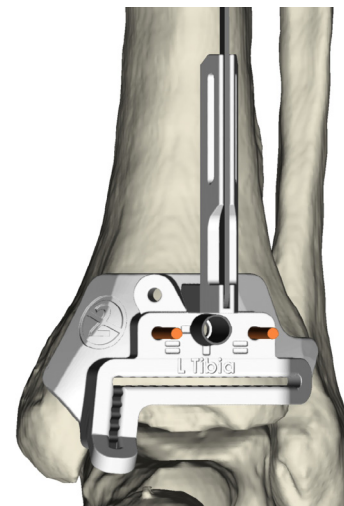
1. Confirm the work order number and patient information on the **Tibia Cutting Guide** are correct.



2. Press fit the **Fluoroscopic Insert** into the **Tibia Cutting Guide**. Press fit a **Reciprocating Saw Blade** into the tibia axis blade mount with the teeth facing the posterior.



3. Ensure adequate dissection has been performed to accommodate the 0.5mm soft tissue tolerance of the **Tibia Cutting Guide**. Place the **Tibia Cutting Guide** in the best fit location. Visually confirm the Guide is seated evenly around its' perimeter.



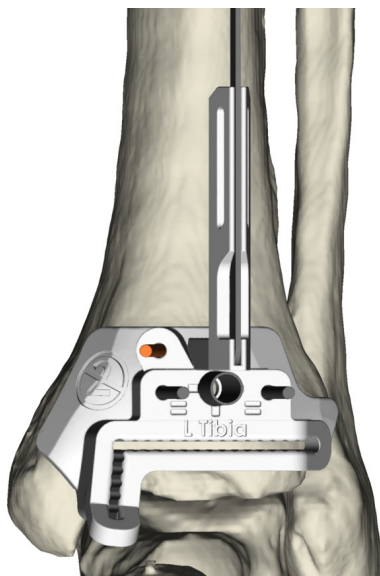
4. Place pins through the Parallel Pin Holes of the **Tibia Cutting Guide** for initial fixation of the device.

To ensure successful surgery in the event of device malfunction, have a tray of standard Exactech Vantage Total Ankle Arthroplasty instrumentation available at the time of surgery. Switch to standard Exactech Vantage Total Ankle Arthroplasty instrumentation if the device is dropped in the surgical suite.

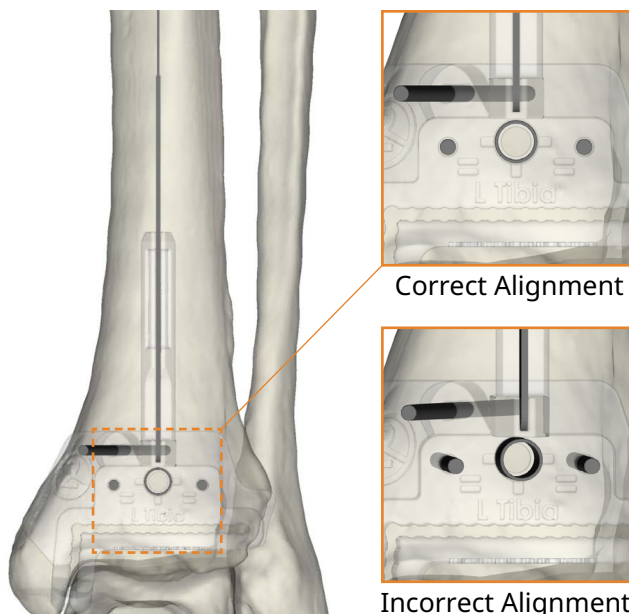
**Note: Determining the best fit location may require applying pressure from multiple vectors and/or with two hands. Use the case report for visual reference of correct guide placement.**

CONSULT INSTRUCTIONS FOR USE PRIOR TO USING GUIDES

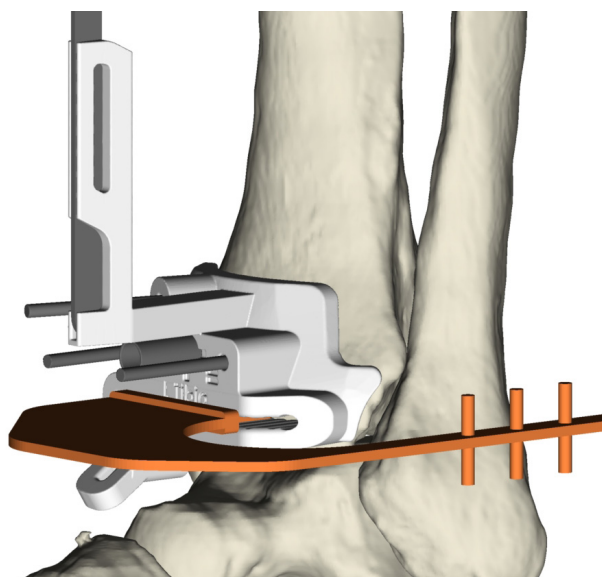
## PROCEDURE A: TIBIA CUTTING GUIDE



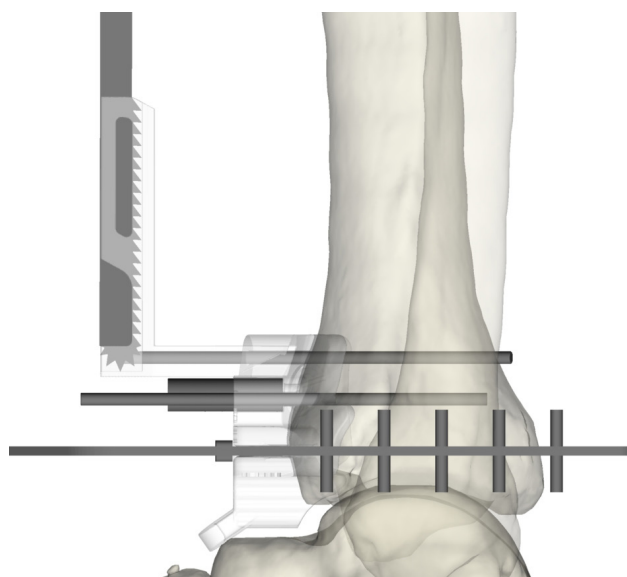
5. Place the oblique fixation **Pin**.



6. Take an anterior fluoroscopic image to confirm placement of the guide matches the virtual surgical plan. Use the **Fluoroscopic Insert** to aid in view alignment.



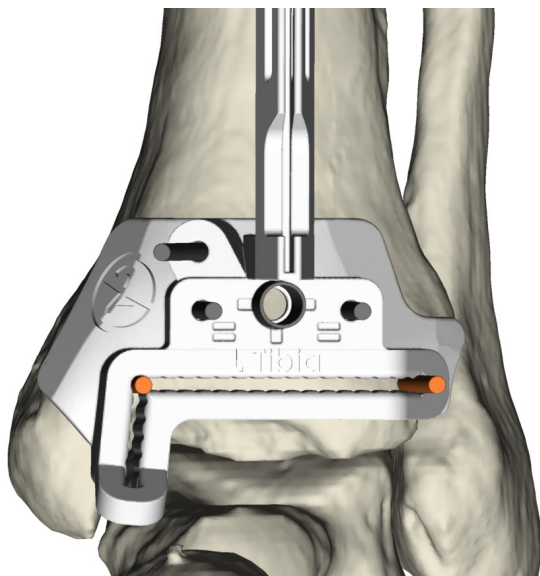
7. Insert the Angel Wing into the slot of the **Tibia Cutting Guide**. The **Angel Wing** should sit flush against the anterior surface of the guide.



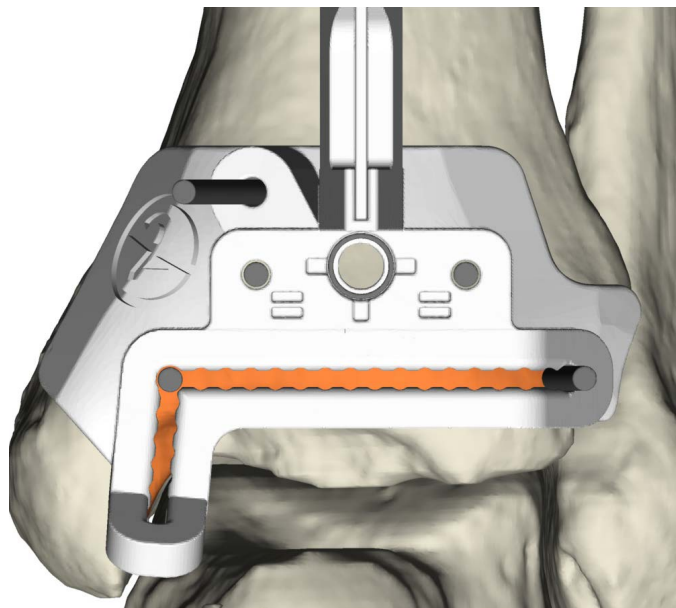
8. Take a lateral fluoroscopic image to confirm the height and location of the tibia cut match the virtual surgical plan. Remove the **Angel Wing** and **Reciprocating Saw Blade** from the guide.

CONSULT INSTRUCTIONS FOR USE PRIOR TO USING GUIDES

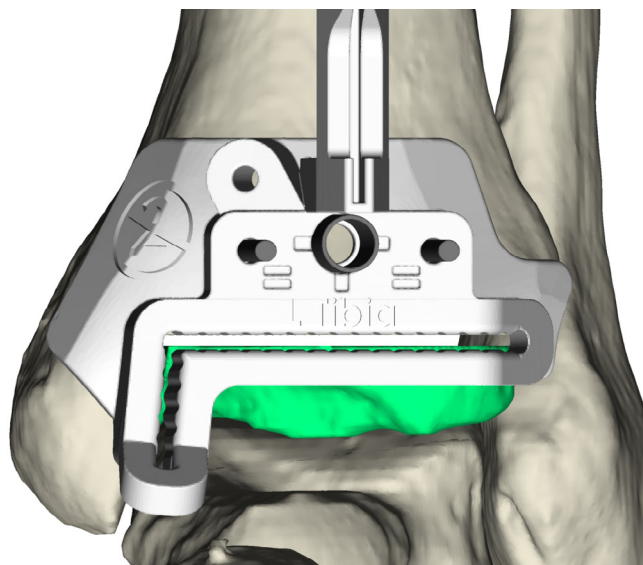
## PROCEDURE A: TIBIA CUTTING GUIDE



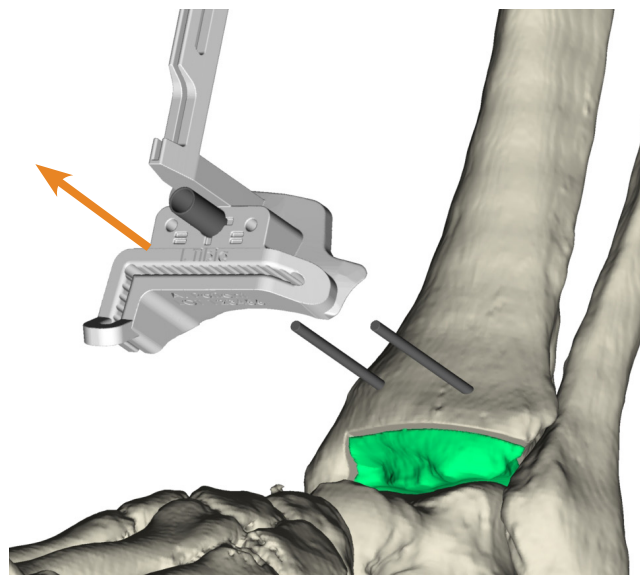
9. Place the medial and lateral resection limit **Pins**.



10. Cut the distal tibia using an oscillating saw, taking care not to penetrate through the posterior capsule where the neurovascular bundle is located. A reciprocating saw may be used to cut the bone along the medial malleolus. A portion of the anterior lateral tibia may remain after the initial cut. This should be cleared to make room for the anterior flange of the tibial component.



11. Leaving the parallel **Pins** fixated to the tibia, remove all other **Pins** from the tibia bone.

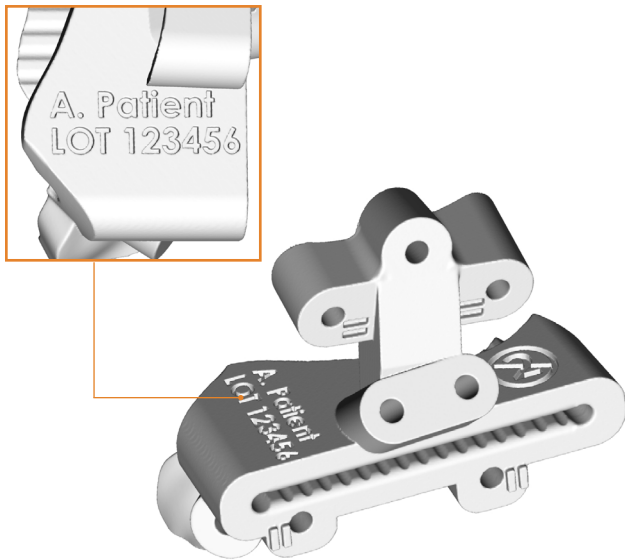


12. Remove the **Tibia Cutting Guide** by sliding it off the parallel **Pins**. Remove any generated debris with lavage.

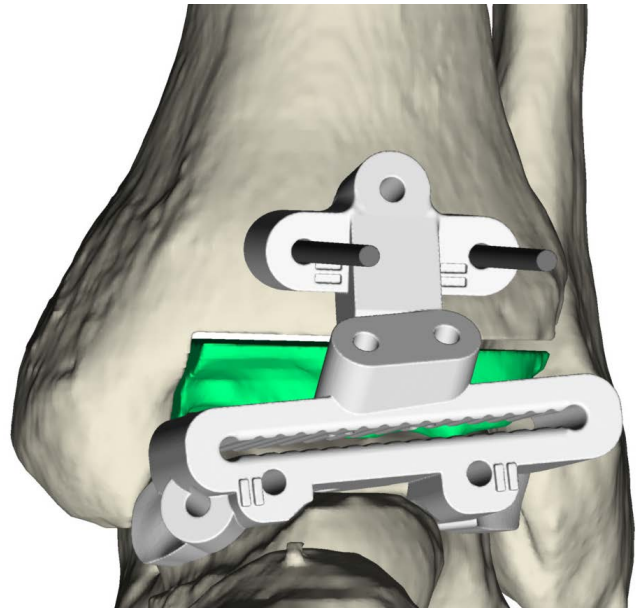
CONSULT INSTRUCTIONS FOR USE PRIOR TO USING GUIDES

## PROCEDURE B1: TALUS CUTTING GUIDE

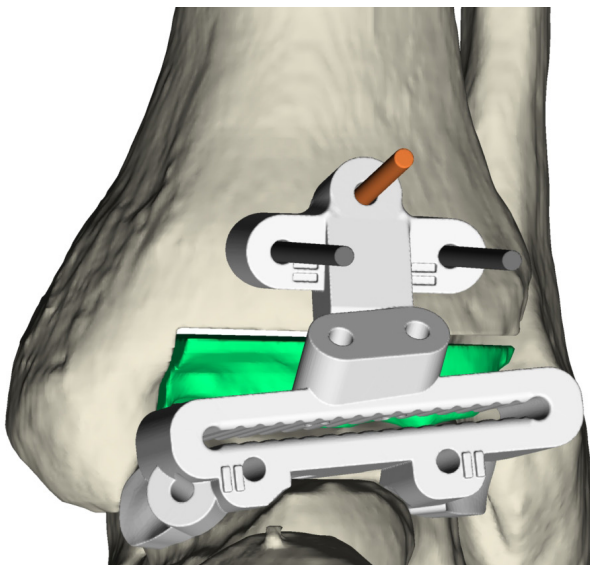
If case is a Flat Cut Talus, proceed to Procedure B2.



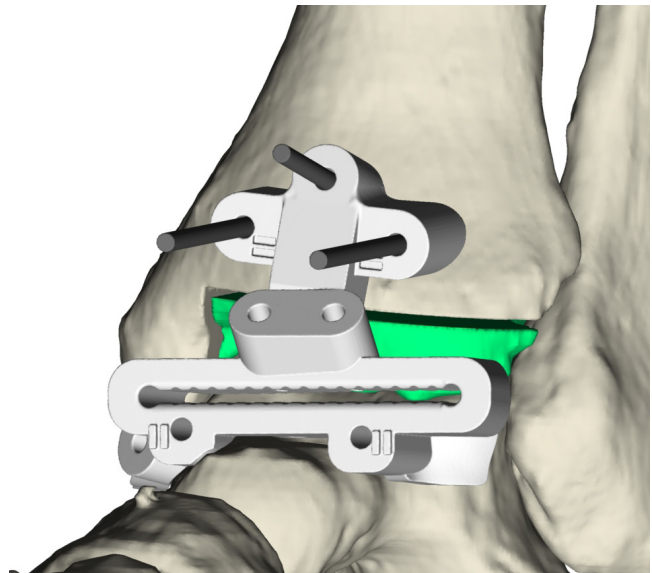
1. Confirm the work order number and patient information on the **Talus Cutting Guide** are correct.



2. Ensure adequate dissection has been performed to accommodate the 0.5mm soft tissue tolerance of the **Talus Cutting Guide**. Slide the tibia interface of the **Talus Cutting Guide** over the tibia parallel **Pins**.



3. Ensure the guide is fully seated on the tibia, and place the tibia oblique fixation **Pin**.

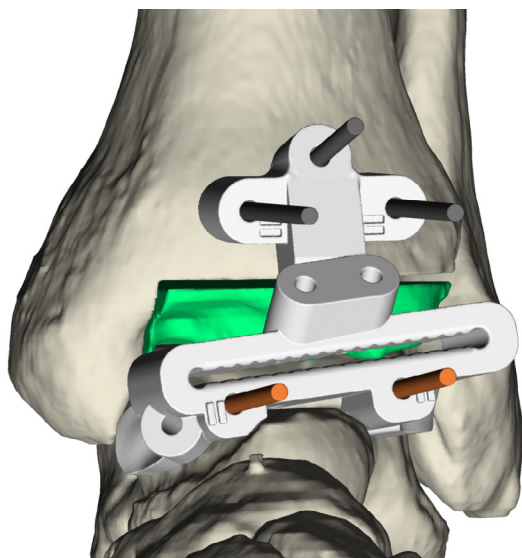


4. While rotating the foot as necessary, place the **Talus Cutting Guide** in the best fit location. Visually confirm the Guide is seated evenly around its' perimeter.

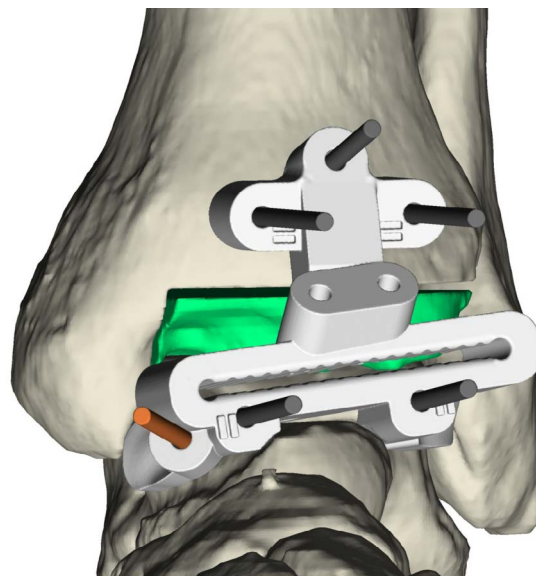
**Note:** Determining the best fit location may require applying pressure from multiple vectors and/or with two hands. Use the case report for visual reference of correct guide placement.

CONSULT INSTRUCTIONS FOR USE PRIOR TO USING GUIDES

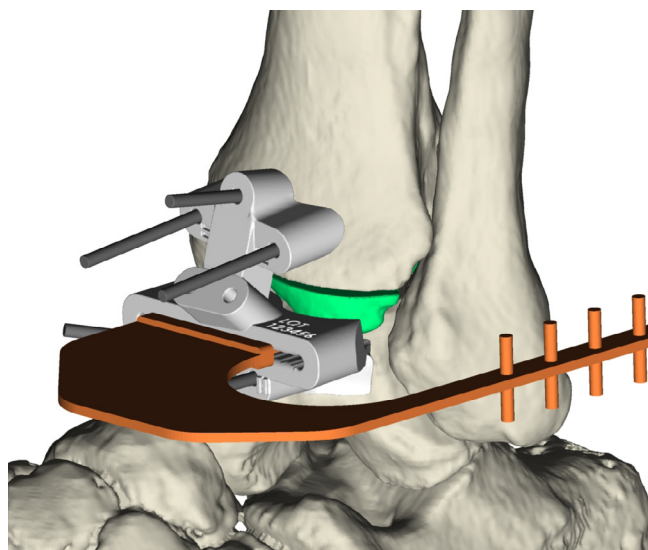
## PROCEDURE B1: TALUS CUTTING GUIDE



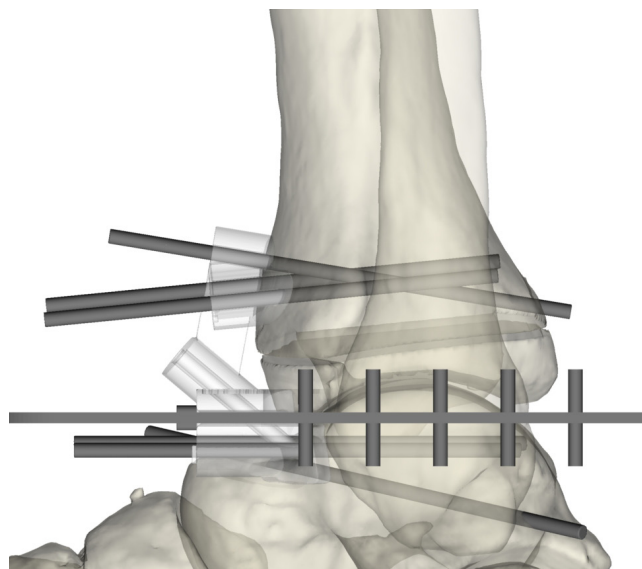
5. Place pins through the parallel **Pin** holes of the **Talus Cutting Guide**.



6. Place the talus oblique fixation **Pin**.



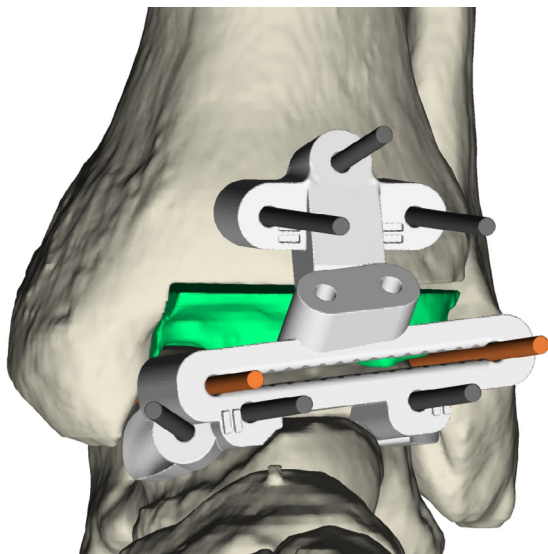
7. Insert the **Angel Wing** into the slot of the **Talus Cutting Guide**. The **Angel Wing** should sit flush against the anterior surface of the guide.



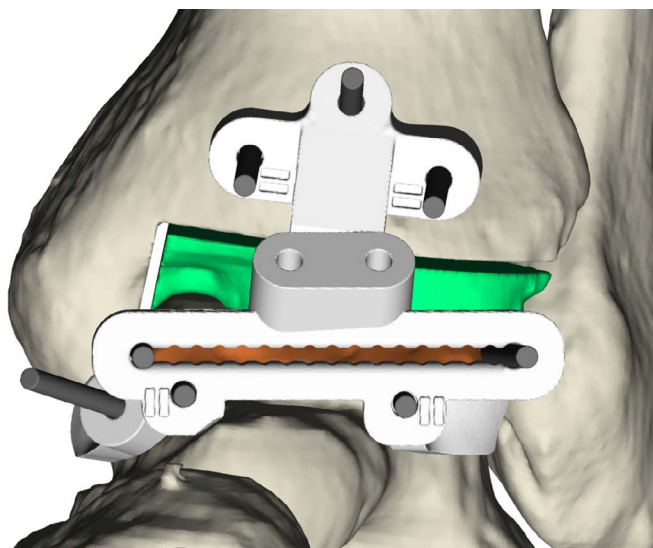
8. Take a lateral fluoroscopic image to confirm the height and location of the talus cut match the virtual surgical plan. Remove the **Angel Wing**.

CONSULT INSTRUCTIONS FOR USE PRIOR TO USING GUIDES

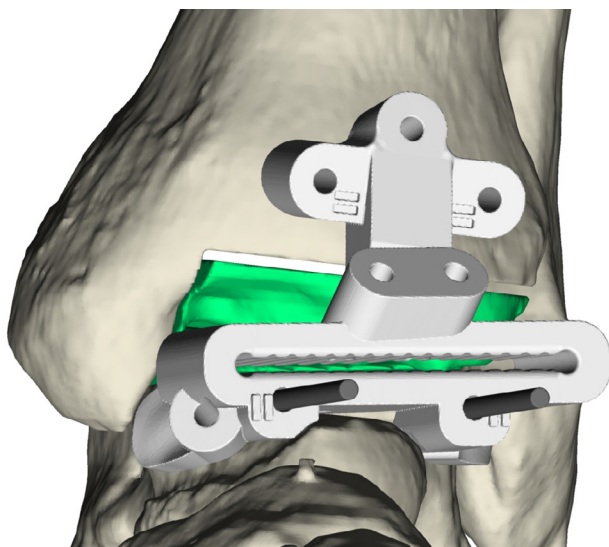
## PROCEDURE B1: TALUS CUTTING GUIDE



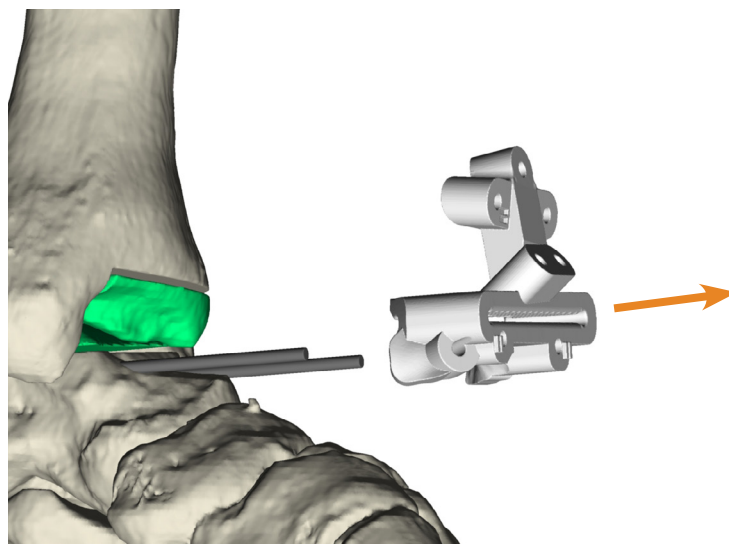
9. Place the medial and lateral resection limit **Pins**.



10. Perform the talar cut with the oscillating saw.



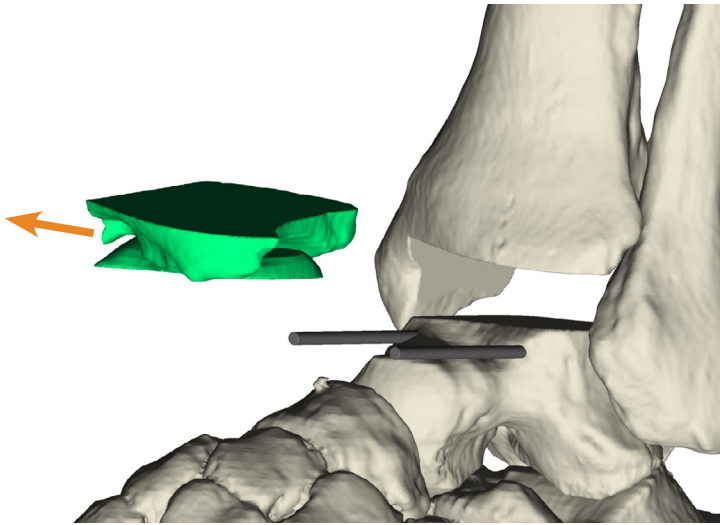
11. Leaving the talus parallel **Pins** fixated to the talus, remove all other **Pins** from both the talus and tibia.



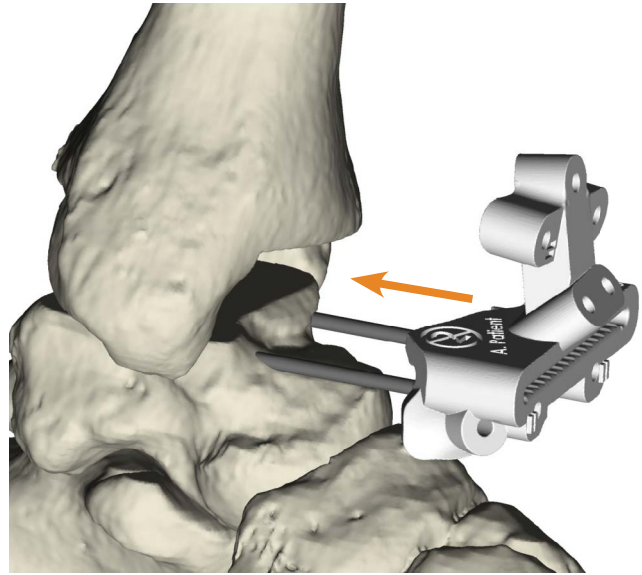
12. Remove the **Talus Cutting Guide** by sliding it off the talus parallel **Pins**.

CONSULT INSTRUCTIONS FOR USE PRIOR TO USING GUIDES

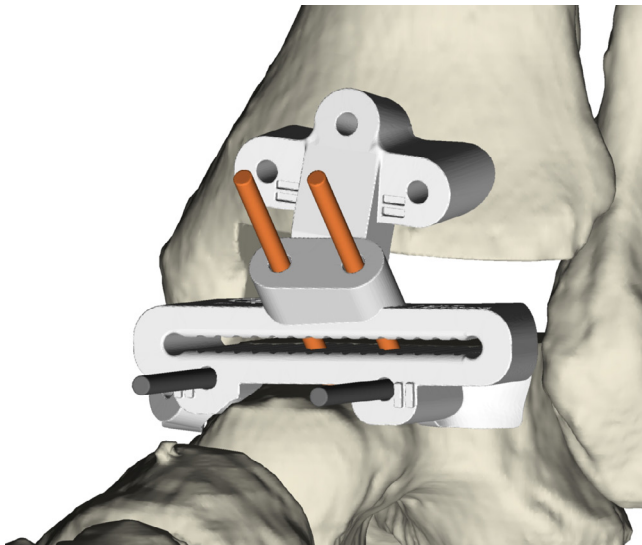
## PROCEDURE B1: TALUS CUTTING GUIDE



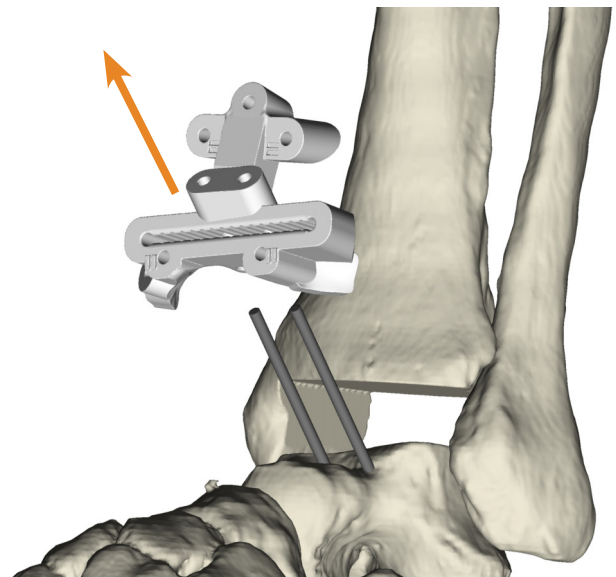
**13.** Remove resected anatomy from the joint space.



**14.** Replace the **Talus Cutting Guide** over the talus parallel **Pins**.



**15.** Ensure the **Talus Cutting Guide** is fully seated, and place the **Lollipop Pins**.



**16.** Remove the talus parallel **Pins**, and remove the **Talus Cutting Guide** by sliding it off the **Lollipop Pins**. Remove any generated debris with lavage.

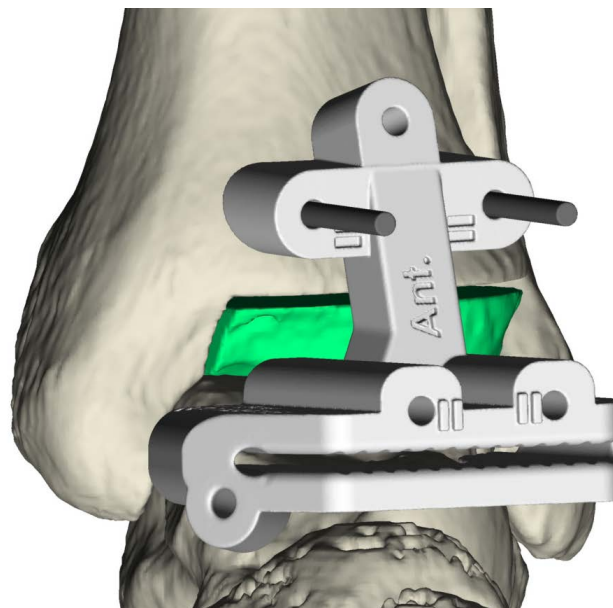
**Complete remaining steps per Vantage  
Ankle Fixed Bearing Operative Technique  
721-00-30.**

CONSULT INSTRUCTIONS FOR USE PRIOR TO USING GUIDES

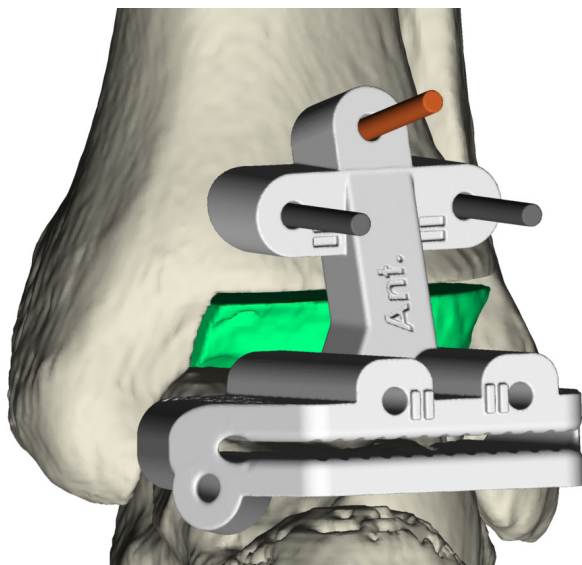
## PROCEDURE B2: FLAT CUT TALUS CUTTING GUIDE



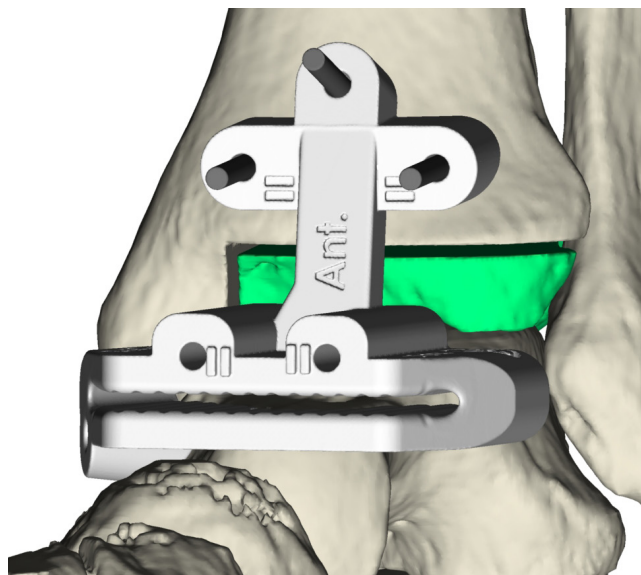
1. Confirm the work order number and patient information on the **Talus Cutting Guide** are correct.



2. Ensure adequate dissection has been performed to accommodate the 0.5mm soft tissue tolerance of the **Talus Cutting Guide**. Slide the tibia interface of the **Talus Cutting Guide** over the tibia parallel Pins.



3. Ensure the guide is fully seated on the tibia, and place the tibia oblique fixation Pin.



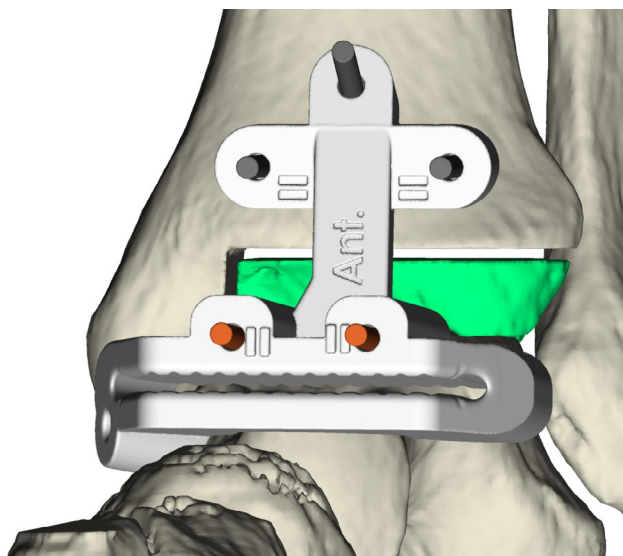
4. While rotating the foot as necessary, place the **Talus Cutting Guide** in the best fit location. Visually confirm the Guide is seated evenly around its' perimeter.

**Note:** Determining the best fit location may require applying pressure from multiple vectors and/or with two hands. Use the case report for visual reference of correct guide placement.

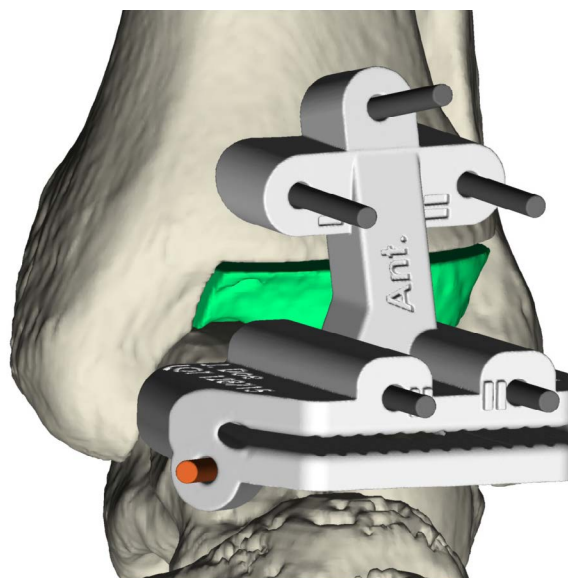


CONSULT INSTRUCTIONS FOR USE PRIOR TO USING GUIDES

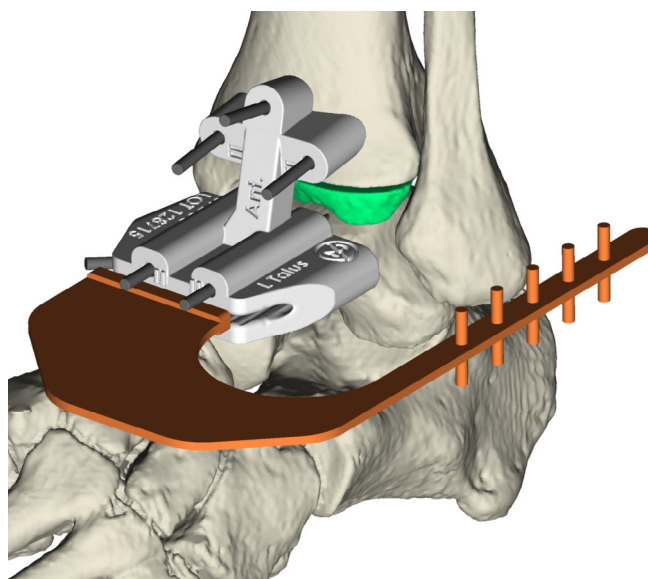
**PROCEDURE B2: FLAT CUT TALUS CUTTING GUIDE**



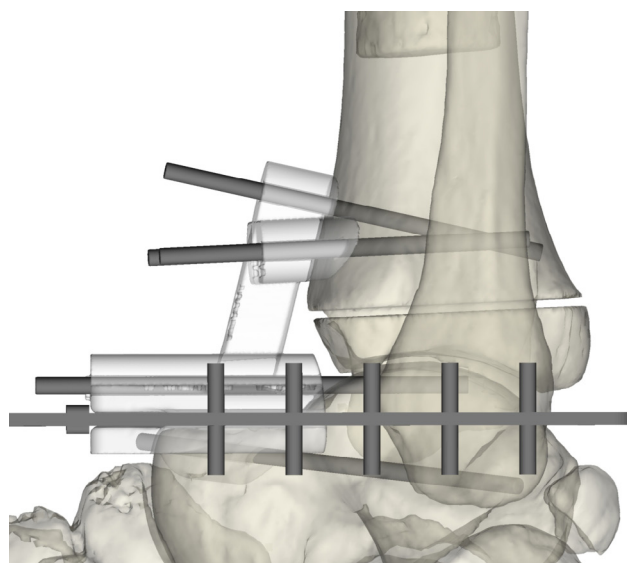
5. Place pins through the parallel **Pin** holes of the **Talus Cutting Guide**.



6. Place the talus oblique fixation **Pin**.



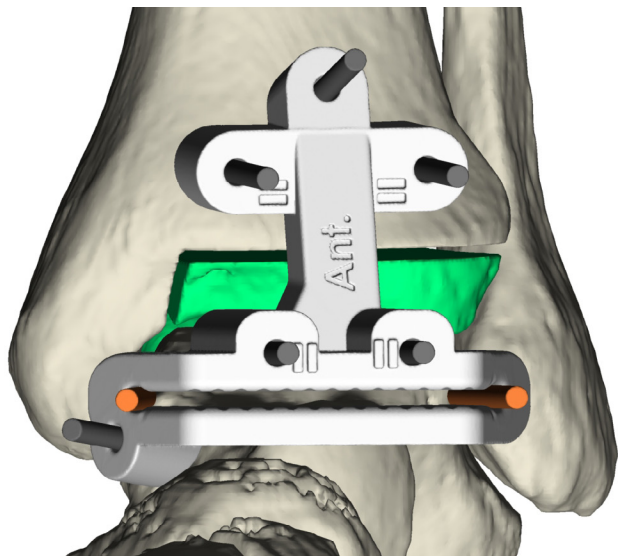
7. Insert the Angel Wing into the slot of the **Talus Cutting Guide**. The **Angel Wing** should sit flush against the anterior surface of the guide.



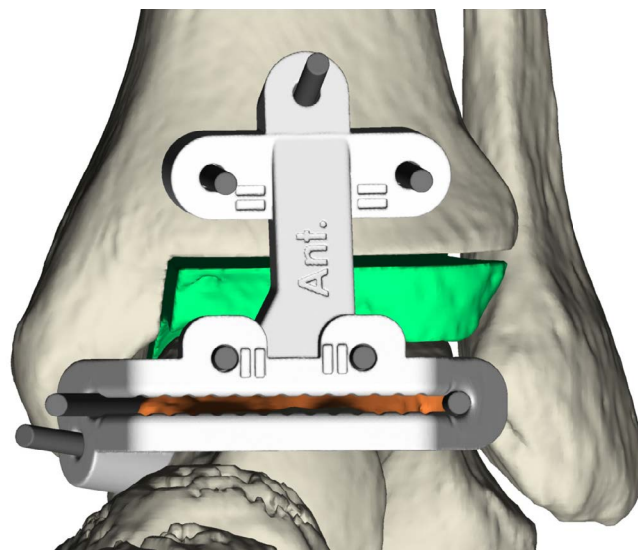
8. Take a lateral fluoroscopic image to confirm the height and location of the talus cut match the virtual surgical plan. Remove the **Angel Wing**.

CONSULT INSTRUCTIONS FOR USE PRIOR TO USING GUIDES

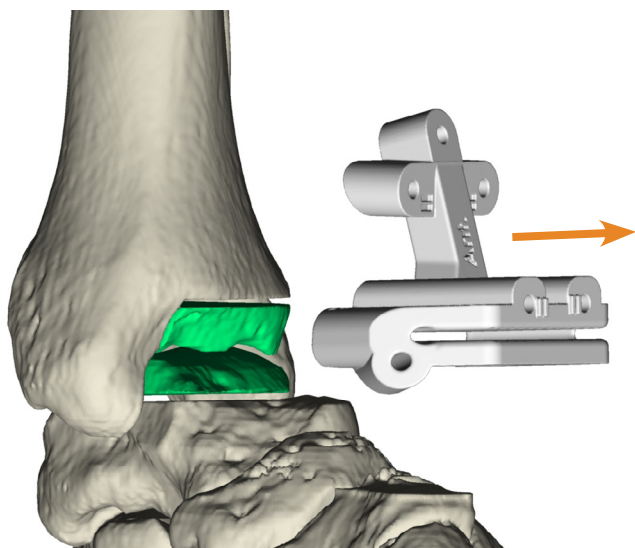
## PROCEDURE B2: FLAT CUT TALUS CUTTING GUIDE



9. Place the medial and lateral resection limit **Pins**.



10. Perform the talar cut with the oscillating saw.



11. Remove all pins and the **Talus Cutting Guide**.  
Remove any generated debris with lavage.

**Complete remaining steps per Vantage  
Flat Cut Talus - Fixed Bearing System  
Decoupled Cut Technique 00-000057.**

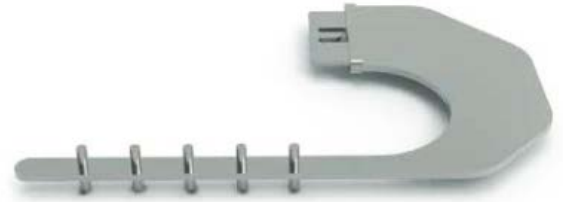
CONSULT INSTRUCTIONS FOR USE PRIOR TO USING GUIDES

## INSTRUMENT LISTING

CATALOG NUMBER	PART DESCRIPTION
----------------	------------------

351-10-14

Angel Wing



351-90-01

2.4mm x 3.5" Fluted Drill Bit

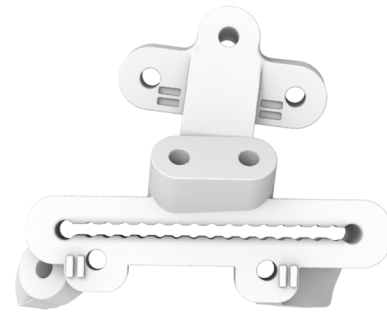
351-90-02

2.4mm x 2.5" Fluted Drill Bit



351-80-00

Talus Cutting Guide



351-80-10

Tibia Cutting Guide

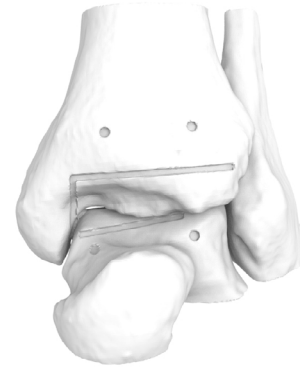


CONSULT INSTRUCTIONS FOR USE PRIOR TO USING GUIDES

## INSTRUMENT LISTING

**CATALOG NUMBER      PART DESCRIPTION**

351-80-90                  Anatomical Model



351-80-11                  Fluoroscopic Insert



351-91-03                  Reciprocating Saw Blade (Stryker®)

351-91-06                  Reciprocating Saw Blade (Hall®)



351-01-01                  Lollipop Guide - Size 1

351-01-02                  Lollipop Guide - Size 2

351-01-03                  Lollipop Guide - Size 3

351-01-04                  Lollipop Guide - Size 4

351-01-05                  Lollipop Guide - Size 5

