



Accelerate[®]
CONCENTRATING SYSTEM

Bone Marrow
Concentrate

Surgeon focused. Patient driven.[™]

Exactech[®]
B I O L O G I C S



Accelerate[®]
CONCENTRATING SYSTEM

Accelerate Delivers

Accelerate[®] Bone Marrow Concentrate System is improving the way bone marrow is concentrated by offering high-quality cell yields through gentle centrifugation, which preserves the fragile buffycoat layer.

The system sets itself apart by providing single-spin operation, reducing processing steps and improving concentrate outcomes. This easy-to-use system provides a fast and convenient method for concentrating cells in the operating room, while reducing a patient's risk of infection and improving surgical outcomes.

High Bone Marrow Cell Concentrate

The Accelerate Concentrating System's gentle centrifugal acceleration isolates the buffycoat. Gentle deceleration preserves this layer of highly concentrated cells, resulting in a high yield of Bone Marrow Concentrate (BMC).

Sterility

The patient's bone marrow is collected into a sterile tube, processed in the centrifuge and piped into the sterile field through a closed system, eliminating the possibility of transfer contamination when a circulating nurse is required to manually transfer BMC into the surgical field. Only one sterile barrier entry is required. This feature greatly reduces a patient's risk of infection and improves surgical outcomes.

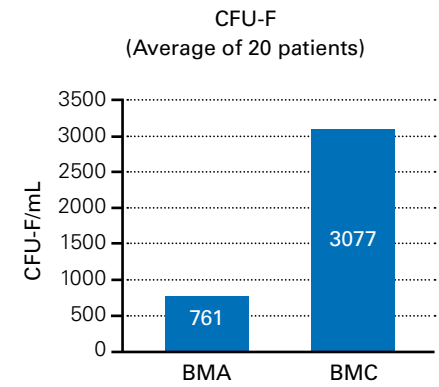
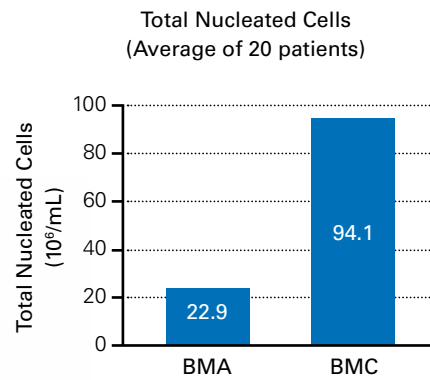
Flexible and Convenient

Accelerate can effectively process 30-240mL of bone marrow aspirate via a single, 12-minute spin. Light and portable, the centrifuge may be easily transferred between operating rooms.

Maximizing Bone Marrow Cell Concentration¹

Testing performed by BioScience Research Associates, Inc., an affiliate of Harvard Medical School, demonstrates that BMC processed by the Accelerate Concentrating System provides a 400 percent increase in total nucleated cell concentration compared to the baseline of bone marrow.

Compared to the baseline of BMA, BMC demonstrates a four-fold increase in the colony-formation units of fibroblasts (CFU-F).



4X Concentration of Bone Marrow Cells²



Closed System Eliminates Possible Transfer Contamination



52mL BMA = 6mL BMC in 12 minutes¹

References

1. Data on file at Exactech.
2. **Kevy SV, et al.** Analysis of Accelerate System for Human Bone Marrow Concentration. *Preliminary Report*. 2009 Sept 14.

Exactech is proud to have offices and distributors around the globe. For more information about Exactech products available in your country, please visit www.exac.com

Accelerate® Bone Marrow Concentrating System is manufactured by EmCyte Corporation and is distributed by Exactech, Inc.

The products discussed herein may be available under different trademarks in different countries. All copyrights, and pending and registered trademarks, are property of Exactech. This material is intended for the sole use and benefit of the Exactech sales force and physicians. It should not be redistributed, duplicated or disclosed without the express written consent of Exactech. ©2018 Exactech. 713-07-20 Rev. A 0618



EXACTECH, INC.
2320 NW 66TH COURT
GAINESVILLE, FL 32653 USA

+1 352.377.1140
+1 800.EXACTECH
+1 352.378.2617 (FAX)
www.exac.com