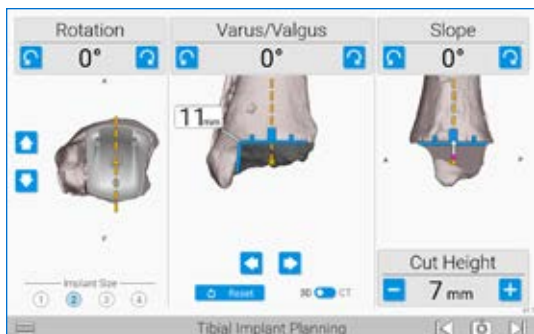


# Experience Ankle Surgery Like Never Before

**eGPS**  
ANKLE



Experience ankle surgery like never before with ExactechGPS® Ankle. Powered by Active Intelligence®, ExactechGPS is an active navigation technology that provides dynamic intraoperative feedback in a compact and mobile system within the sterile field. With no capital purchase process, ExactechGPS sets a new standard of care with easier and faster access to the world's only navigation for knee, shoulder and ankle arthroplasty.



Select and test in real-time:

- Implant size
- Resection heights
- Degrees of varus/valgus, rotation, slope and medial/lateral

### GAIN FLEXIBILITY

- Seamlessly connect and adjust your surgical plan real-time with intraoperative instrument guidance. Integrated CT visibility may also reduce potential fluoroscopy time.

### USE WITH EASE

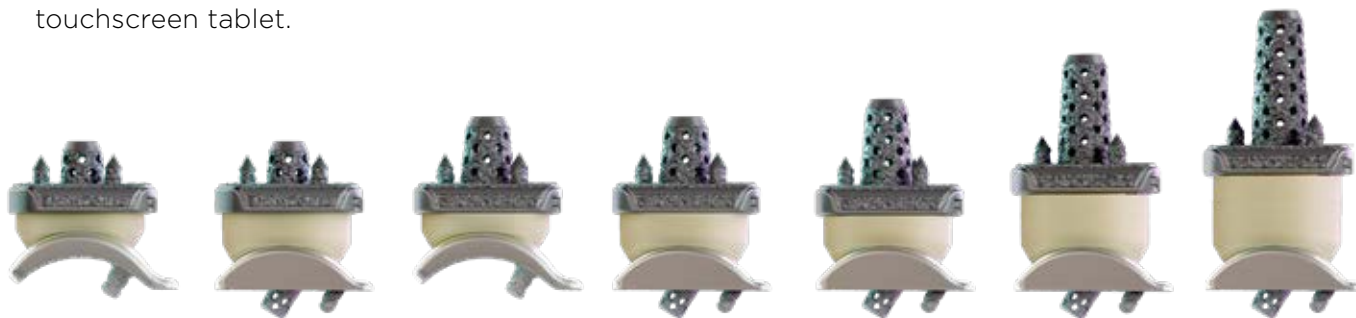
- Compact and mobile, GPS Ankle is used within the sterile field and features a touchscreen tablet.

### PERFORM WITH CONFIDENCE

- Pre-clinical studies, based on bench testing and sawbones, reported an accuracy of 2mm and 2 degrees relative to the CT-based surgical plan.<sup>1-3</sup>

### ACCESS WITHOUT THE HEADACHE

- GPS Ankle is available without a capital purchase process.



GPS Ankle is compatible with Exactech's flagship Vantage® Total Ankle System, including curved and flat talar implants and 3D/3D+ tibial implants.

### REFERENCES

1. Data on file at Exactech.
2. **Rueff M. et al.** Accuracy and Precision Evaluation of Image-based Computer Assisted Surgical System for Total Ankle Arthroplasty. 2023. Accepted to ORS.
3. **Rueff M. et al.** Evaluation of error sources for an Image-based Computer Assisted Surgical System for Total Ankle Arthroplasty. 2023. Accepted to ORS.

*ExactechGPS® is manufactured by Blue Ortho and distributed by Exactech, Inc.*